

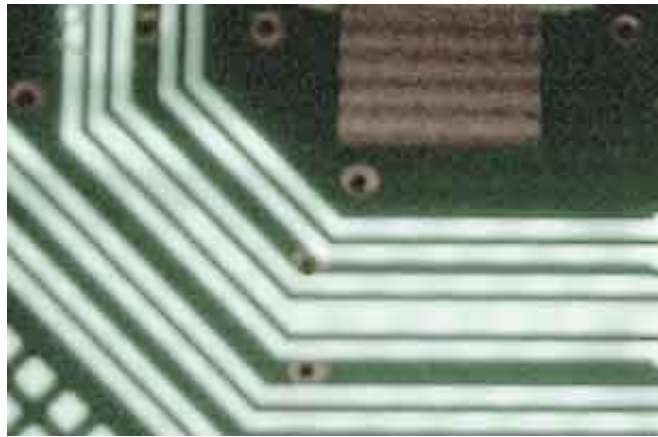


DOWNLOAD



DOWNLOAD

[Hama Usb Adapter Serial 9 Pin Driver Download](#)



[Hama Usb Adapter Serial 9 Pin Driver Download](#)



DOWNLOAD



DOWNLOAD

That is the reason why people still sell USB-Serial adapter to those electronic DIY enthusiast.. Building electronic device with serial port interface is cheaper than buiding one that uses USB.. AX88179 is the USB 3 0 to Gigabit Ethernet controller which integrates USB 3 0 PHY and.

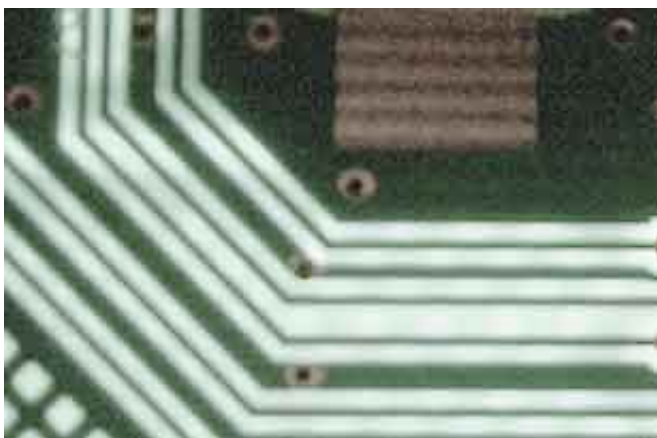
1. [hama adapter driver](#)
2. [hama vga hdmi adapter driver](#)
3. [hama gigabit ethernet adapter driver](#)

Supports suspend mode and remote wakeup via link-change, Magic Packet, Microsoft Wakeup Frame and external wakeup pin; Supports.. Windows 7 32-bit/64-bit WHCK drivers setup program, V3 0 6 0, 2018-02-09 Though some might argue that Serial port are things in the past, it is still the most popular port for those who are into electronic DIY.. 04 controlled plotter The plotter program is OpenCPN Your instructions are helpful and clear, but am still having problem.. Bonus: What application benefits from usb-serial port adaptor? For starters, there are modems which uses RS-232 serial port.

hama adapter driver

hama adapter driver, hama bluetooth adapter driver, hama vga hdmi adapter driver, hama usb adapter driver, hama gigabit ethernet adapter driver, hama usb rs232 serial adapter driver, hama network adapter driver, hama bluetooth usb adapter drivers, hama bluetooth usb adapter driver download, hama bluetooth adapter 49218 driver, hama ethernet adapter driver, hama usb sata adapter driver [Lonely Planet Vietnam Pdf](#)

The site has to build such interface You can see my home-made morse code oscillator here: Where can I get USB to Serial port converter? You can get it from your local computer stores or order it online!Hola MyPapit, I am trying to interface an Icom AIS receiver with my Ubuntu 12.. 0: generic converter detected usb 1-1: generic converter now attached to ttyUSB0 usbcore: registered new interface driver usbserial_generic As you can see, the new serial port device is mapped to /dev/ttyUSB0.. Usb 1-1: new full speed USB device using uhci_and address 2 usb 1-1: configuration #1 chosen from 1 choice After that, unplug the device and type "lsusb".. Some home-made devices includes which also depends on the serial port I use the adaptor to hook up my morse keyer in order to send morse code through the internet using.. Here's how to enable USB-Serial port adapter in Ubuntu Linux (with credit to from) First plug in the USB-Serial Port adaptor to one of your USB port. [Download MonitorMagic last version](#)



[chrome remote desktop host is offline](#)

hama vga hdmi adapter driver

[X Force Autocad 2016 Keygen](#)

You can instruct Ubuntu to load this module automatically by include the line: "usbserial vendor=0x4348 product=0x5523"

inside “/etc/modules” file.. You will see a list of output similar to this Bus 003 Device 001: ID 0000:0000 Bus 002 Device 007: ID 03f0:4f11 Hewlett-Packard Bus 002 Device 006: ID 05e3:1205 Genesys Logic, Inc. [Buy Mac Software](#)

hama gigabit ethernet adapter driver

[Download Game Ppspp 100mb An](#)

Bus 003 Device 001: ID 0000:0000 Bus 002 Device 007: ID 03f0:4f11 Hewlett-Packard Bus 001 Device 002: ID 4348:5523 ---
--- --- (notice the additional line!) Bus 002 Device 006: ID 05e3:1205 Genesys Logic, Inc.. Downloads Free! 4 Drivers and Manual for Hama 00049262 - USB RS - 232 Serial Adapter 9 - pin USB.. Wait for a couple of second, then run “dmesg” You should see these message at the end of dmesg output.. Here's where you can download Free! The newest software for your 00049262 - USB RS - 232 Serial Adapter 9 - pin.. Afilias Optical Mouse H3003 Bus 002 Device 004: ID 15d9:0a33 Now we know the vendor id and the product id of the USB-Serial Port converter, this will enable us to load the linux kernel module “usbserial” to activate the device, like this: sudo modprobe usbserial vendor=0x4348 product=0x5523 Run “dmesg” again and you shall see lines similar like this: usbserial_generic 1-1:1.. Afilias Optical Mouse H3003 Bus 002 Device 004: ID 15d9:0a33 Plug in the USB-Serial Port converter back, and run “lsusb” again, and you shall see an additional line, like this. e828bfe731

[Ccleaner Antivirus download free](#)

e828bfe731

[Download Epson Cx4800 Windows Vista free](#)